

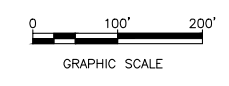
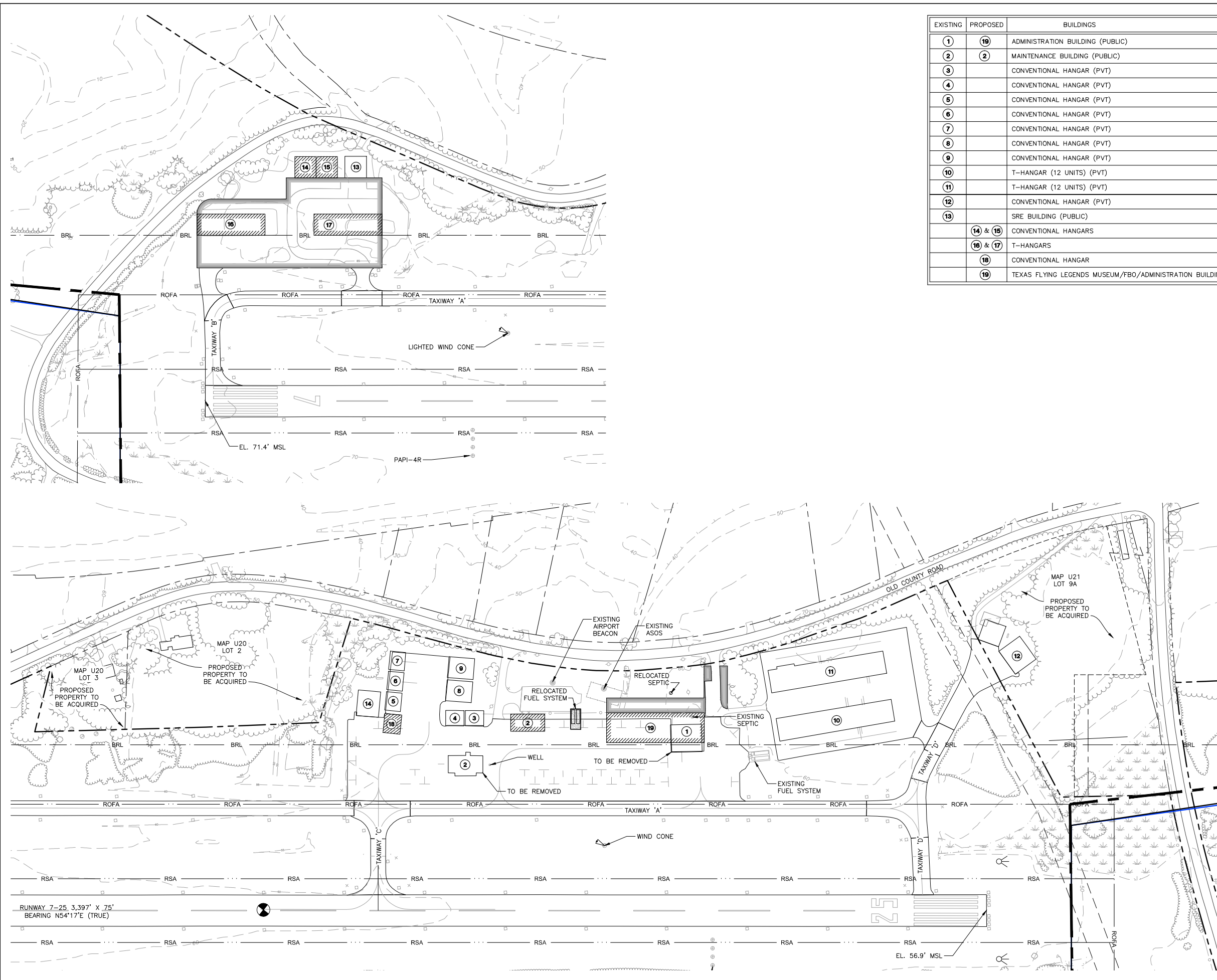
---

## Appendix 4 - Alternative Plans

The 11 sheets contained in this appendix are discussed in Section 5 of the report.

Figure	Page	Title
5-1	113	Terminal Area Plan – Development Alternative 1
5-2	114	Terminal Area Plan – Development Alternative 2
5-3	115	Terminal Area Plan – Development Alternative 3
5-4	116	Terminal Area Plan – Development Alternative 4
5-5	117	Terminal Area Plan – Development Alternative 5
5-6	118	Alternative 1 –TERPS 20:1 Analysis Runway 07 - 603' Runway Extension
5-7	119	Alternative 1 – Existing TERPS 20:1 Surface Analysis Runway 25
5-8	120	Alternative 2 – TERPS 20:1 Surface Analysis Runway 07
5-9	121	Alternative 3 – TERPS 20:1 Surface Analysis Runway 25
5-10	122	Alternative 4 – TERPS 20:1 Surface Analysis Runway 07
5-11	123	Alternative 5 – TERPS 20:1 Surface Analysis Runway 25 - 68' Runway Extension

EXISTING	PROPOSED	BUILDINGS
1	19	ADMINISTRATION BUILDING (PUBLIC)
2	2	MAINTENANCE BUILDING (PUBLIC)
3		CONVENTIONAL HANGAR (PVT)
4		CONVENTIONAL HANGAR (PVT)
5		CONVENTIONAL HANGAR (PVT)
6		CONVENTIONAL HANGAR (PVT)
7		CONVENTIONAL HANGAR (PVT)
8		CONVENTIONAL HANGAR (PVT)
9		CONVENTIONAL HANGAR (PVT)
10		T-HANGAR (12 UNITS) (PVT)
11		T-HANGAR (12 UNITS) (PVT)
12		CONVENTIONAL HANGAR (PVT)
13		SRE BUILDING (PUBLIC)
	14 & 15	CONVENTIONAL HANGARS
	16 & 17	T-HANGARS
	18	CONVENTIONAL HANGAR
	19	TEXAS FLYING LEGENDS MUSEUM/FBO/ADMINISTRATION BUILDING



Revision	By	Appd.	Y/M/D

Issued	By	Appd.	Y/M/D

File Name: fig\_5-1\_terminal\_pln\_option\_A.dwg JEB JEB 11.03.22  
 Dwn. Chkd. Dign. Y/M/D

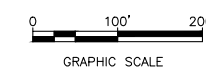
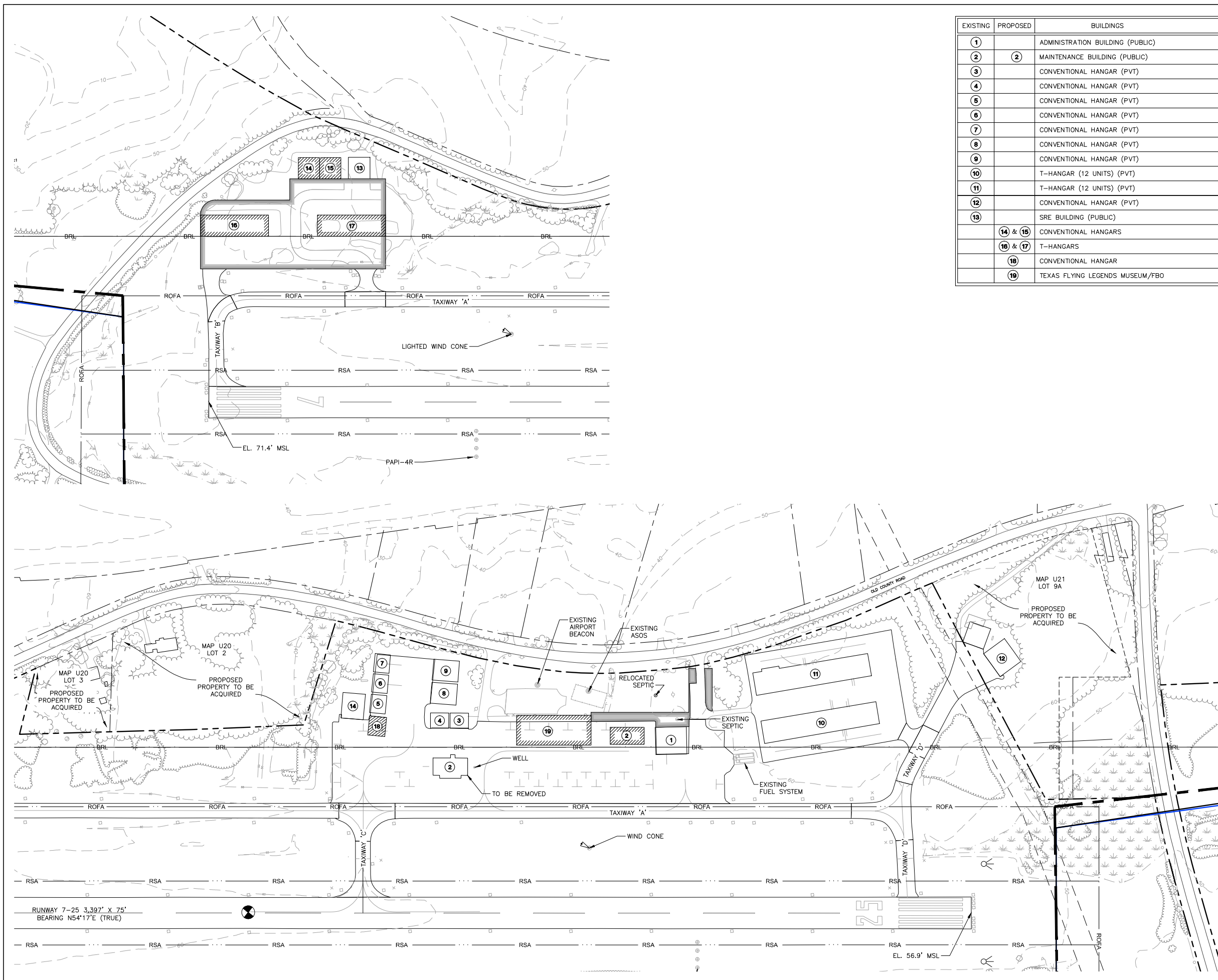
Permit-Seal

Client/Project  
**WISCASSET MUNICIPAL AIRPORT**  
**AIRPORT MASTER PLAN UPDATE**  
 WISCASSET, MAINE

Title  
**TERMINAL AREA PLAN  
 DEVELOPMENT ALTERNATIVE 1**

Project No. 195210458	Scale <b>AS NOTED</b>
Figure No. 5-1	Sheet
	Revision

EXISTING	PROPOSED	BUILDINGS
①		ADMINISTRATION BUILDING (PUBLIC)
②	②	MAINTENANCE BUILDING (PUBLIC)
③		CONVENTIONAL HANGAR (PVT)
④		CONVENTIONAL HANGAR (PVT)
⑤		CONVENTIONAL HANGAR (PVT)
⑥		CONVENTIONAL HANGAR (PVT)
⑦		CONVENTIONAL HANGAR (PVT)
⑧		CONVENTIONAL HANGAR (PVT)
⑨		CONVENTIONAL HANGAR (PVT)
⑩		T-HANGAR (12 UNITS) (PVT)
⑪		T-HANGAR (12 UNITS) (PVT)
⑫		CONVENTIONAL HANGAR (PVT)
⑬		SRE BUILDING (PUBLIC)
⑭ & ⑮		CONVENTIONAL HANGARS
⑯ & ⑰		T-HANGARS
⑱		CONVENTIONAL HANGAR
⑲		TEXAS FLYING LEGENDS MUSEUM/FBO



Revision	By	Appd.	Y3.MM.DD

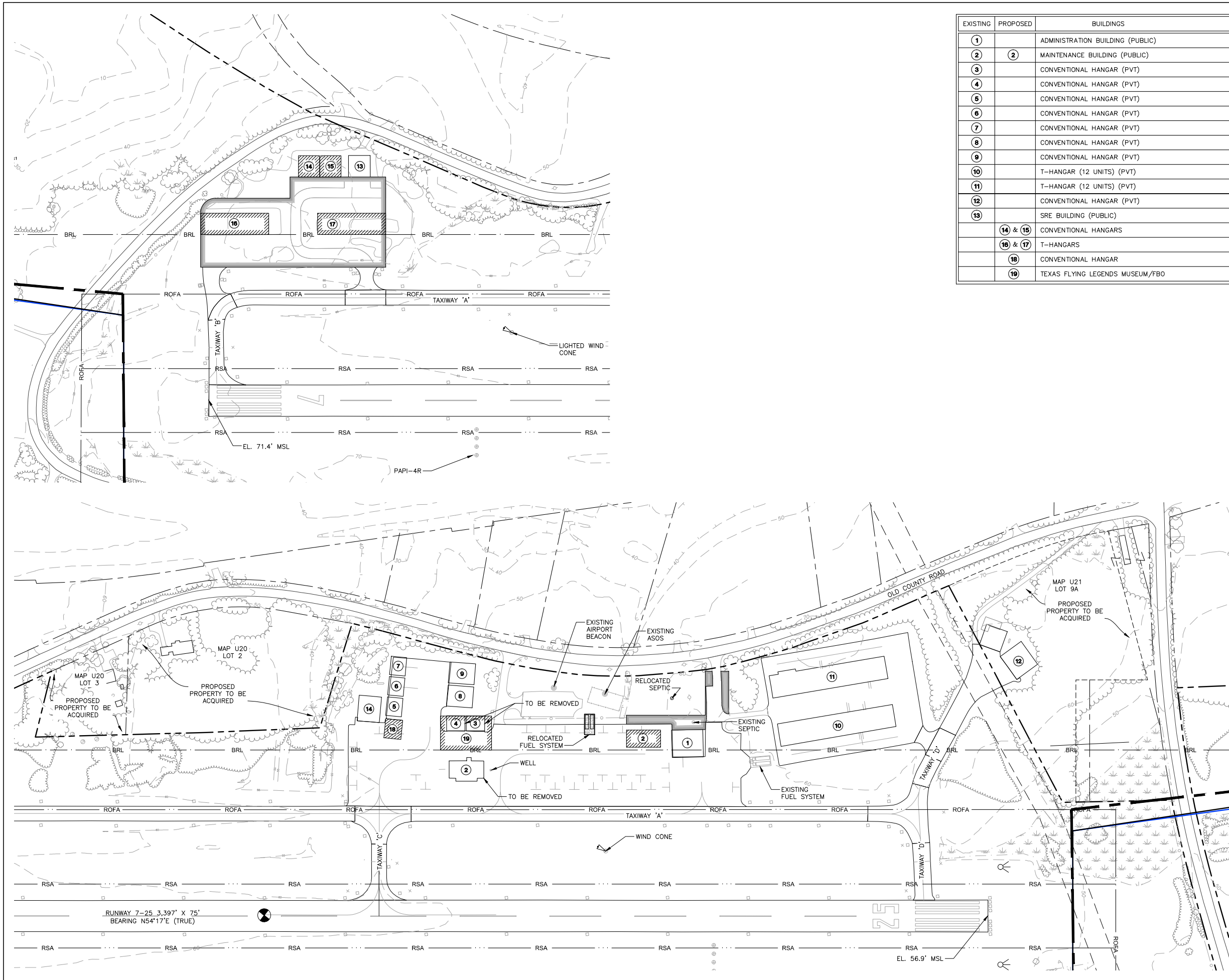
File Name: fig\_5-2\_terminal\_plan\_option\_B.dwg JEB JEB 11.03.22  
Dwn. Chkd. Dign. Y3.MM.DD

Permit-Seal

Client/Project  
WISCASSET MUNICIPAL AIRPORT  
  
AIRPORT MASTER PLAN UPDATE  
  
WISCASSET, MAINE

Title  
TERMINAL AREA PLAN  
DEVELOPMENT ALTERNATIVE 2

Project No. 195210458	Scale AS NOTED
Figure No. 5-2	Sheet of
	Revision



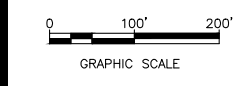
EXISTING	PROPOSED	BUILDINGS
①		ADMINISTRATION BUILDING (PUBLIC)
②	②	MAINTENANCE BUILDING (PUBLIC)
③		CONVENTIONAL HANGAR (PVT)
④		CONVENTIONAL HANGAR (PVT)
⑤		CONVENTIONAL HANGAR (PVT)
⑥		CONVENTIONAL HANGAR (PVT)
⑦		CONVENTIONAL HANGAR (PVT)
⑧		CONVENTIONAL HANGAR (PVT)
⑨		CONVENTIONAL HANGAR (PVT)
⑩		T-HANGAR (12 UNITS) (PVT)
⑪		T-HANGAR (12 UNITS) (PVT)
⑫		CONVENTIONAL HANGAR (PVT)
⑬		SRE BUILDING (PUBLIC)
	⑭ & ⑮	CONVENTIONAL HANGARS
	⑯ & ⑰	T-HANGARS
	⑱	CONVENTIONAL HANGAR
	⑲	TEXAS FLYING LEGENDS MUSEUM/FBO



Stantec Consulting Services Inc.  
 482 Payne Road  
 Scarborough ME 04074 U.S.A.  
 Tel. 207.883.3355  
 Fax. 207.883.3376  
 www.stantec.com

Copyright Reserved  
 The Contractor shall verify and be responsible for all dimensions. DO NOT scale the drawing - any errors or omissions shall be reported to Stantec without delay.  
 The Copyrights to all designs and drawings are the property of Stantec. Reproduction or use for any purpose other than that authorized by Stantec is forbidden.

Consultants



Revision	By	Appd.	YFMMDD

Issued

By	Appd.	YFMMDD

File Name: fig\_5-3\_terminal\_pkn\_option\_C.dwg JEB JEB 11.03.22  
 Dwn. Chkd. Dgn. YFMMDD

Permit-Seal

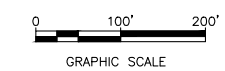
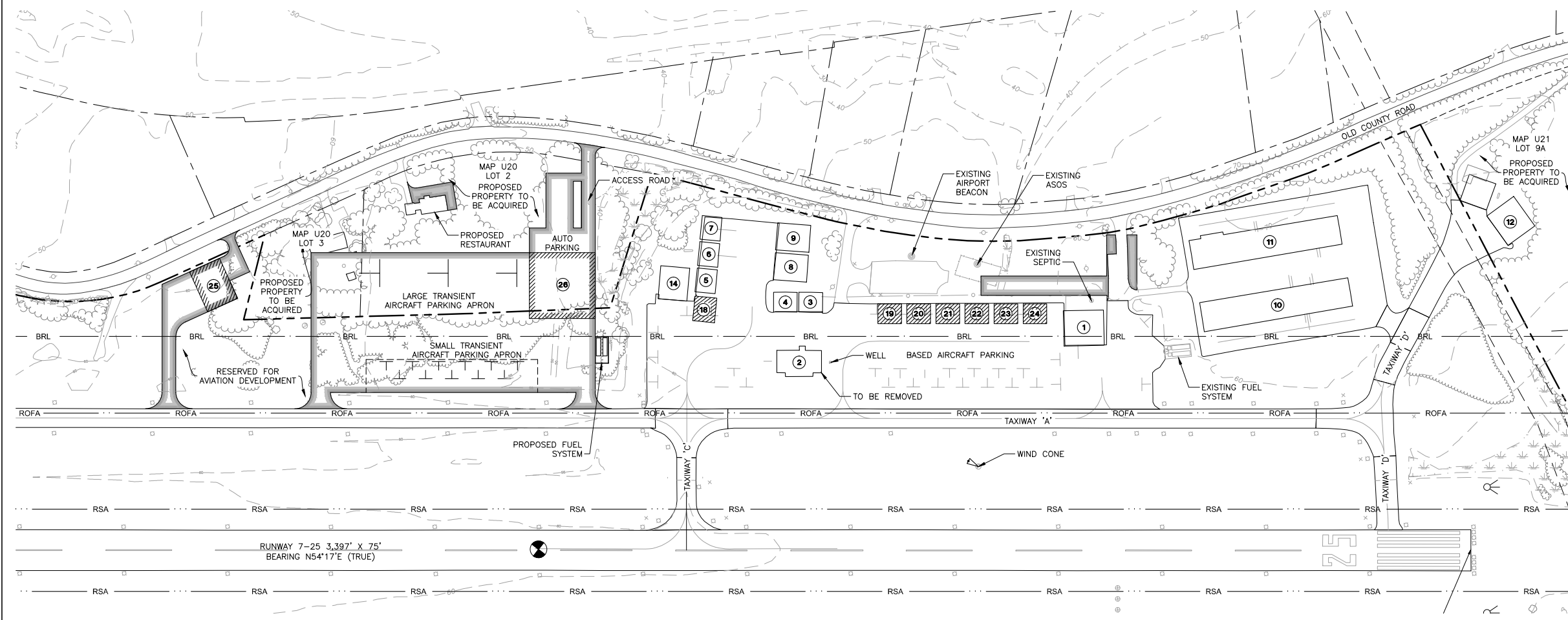
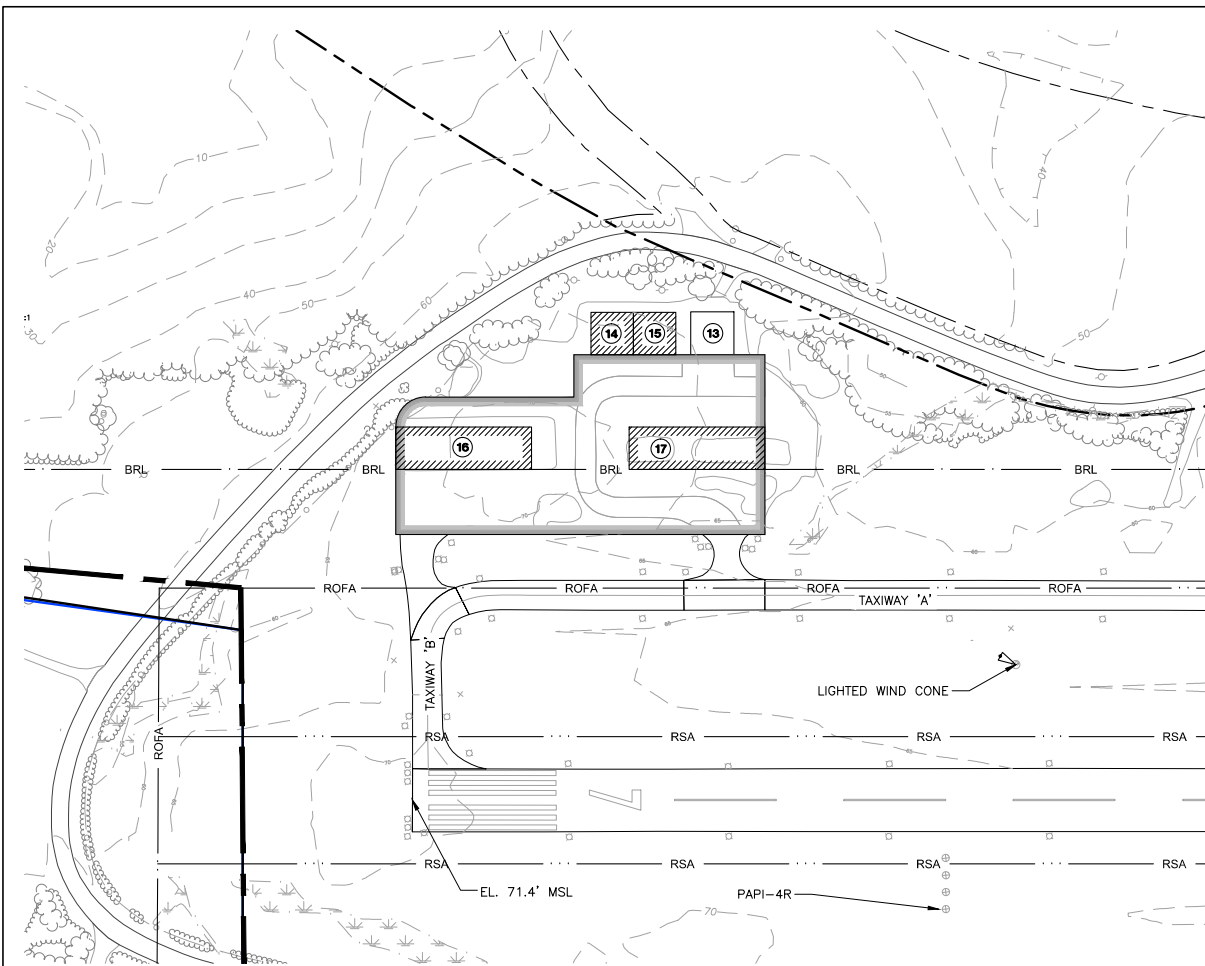
Client/Project  
 WISCASSET MUNICIPAL AIRPORT  
 AIRPORT MASTER PLAN UPDATE  
 WISCASSET, MAINE

Title  
 TERMINAL AREA PLAN  
 DEVELOPMENT ALTERNATIVE 3

Project No. 195210458 Scale AS NOTED  
 Figure No. Sheet Revision



EXISTING	PROPOSED	BUILDINGS
1		ADMINISTRATION BUILDING (PUBLIC)
2	1	MAINTENANCE BUILDING (PUBLIC)
3		CONVENTIONAL HANGAR (PVT)
4		CONVENTIONAL HANGAR (PVT)
5		CONVENTIONAL HANGAR (PVT)
6		CONVENTIONAL HANGAR (PVT)
7		CONVENTIONAL HANGAR (PVT)
8		CONVENTIONAL HANGAR (PVT)
9		CONVENTIONAL HANGAR (PVT)
10		T-HANGAR (12 UNITS) (PVT)
11		T-HANGAR (12 UNITS) (PVT)
12		CONVENTIONAL HANGAR (PVT)
13		SRE BUILDING (PUBLIC)
	14 & 15	CONVENTIONAL HANGARS
	16 & 17	T-HANGARS
	18 to 25	CONVENTIONAL HANGARS
	26	TEXAS FLYING LEGENDS MUSEUM/FBO



Revision	By	Appd.	Y/M/D

Issued

File Name: fig\_5-4\_terminal\_pn\_option\_D.dwg JEB JEB 11.03.22  
 Dwn. Chkd. Dgn. Y/M/M/D

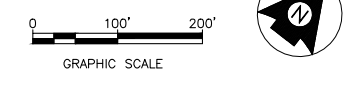
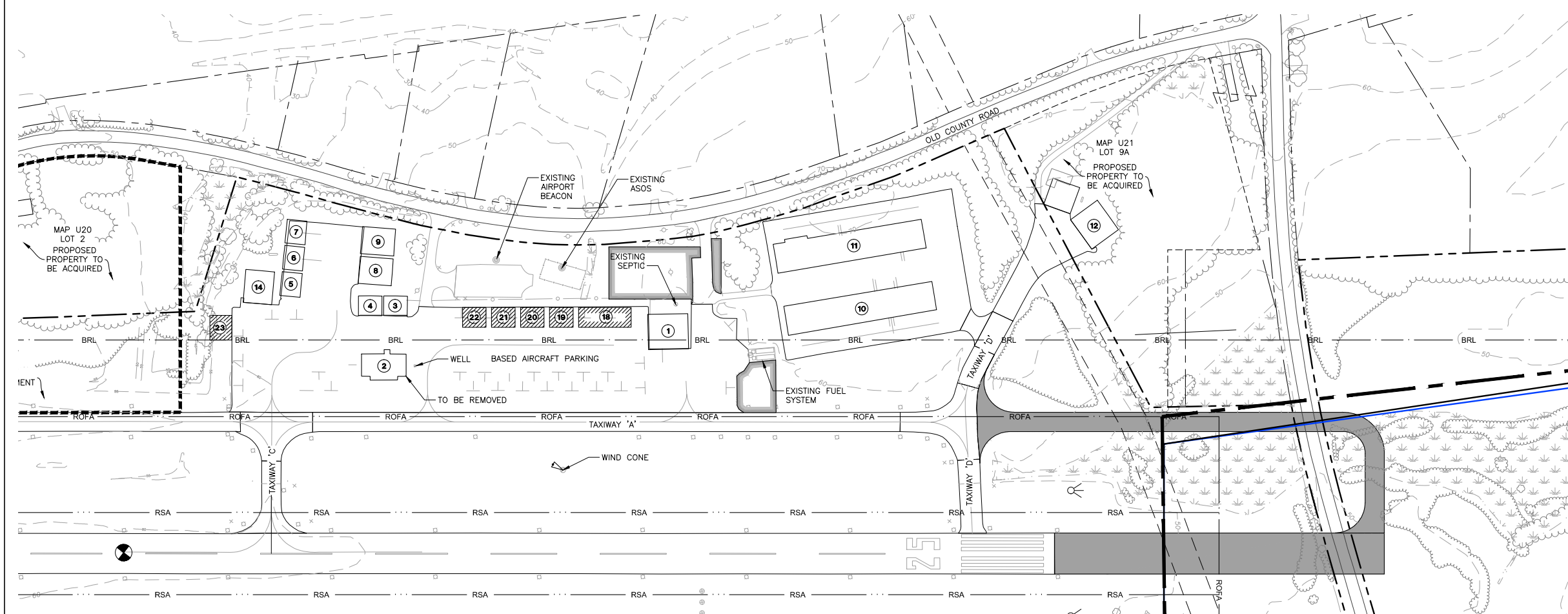
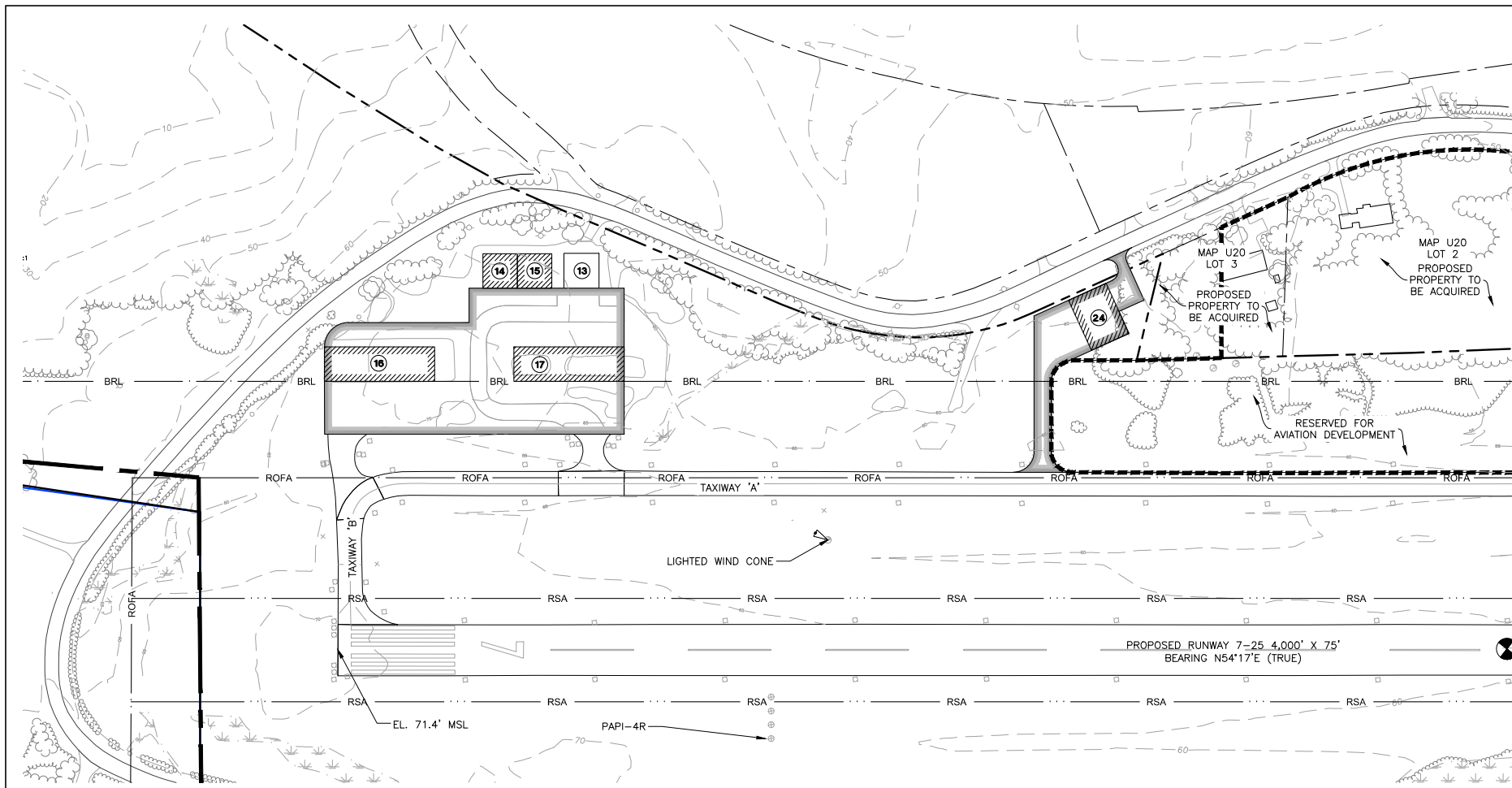
Permit-Seal

Client/Project  
**WISCASSET MUNICIPAL AIRPORT**  
**AIRPORT MASTER PLAN UPDATE**  
 WISCASSET, MAINE

Title  
**TERMINAL AREA PLAN**  
**DEVELOPMENT ALTERNATIVE 4**

Project No. 195210458	Scale AS NOTED
Figure No.	Sheet
	Revision

EXISTING	PROPOSED	BUILDINGS
1		ADMINISTRATION BUILDING (PUBLIC)
2	18	MAINTENANCE BUILDING (PUBLIC)
3		CONVENTIONAL HANGAR (PVT)
4		CONVENTIONAL HANGAR (PVT)
5		CONVENTIONAL HANGAR (PVT)
6		CONVENTIONAL HANGAR (PVT)
7		CONVENTIONAL HANGAR (PVT)
8		CONVENTIONAL HANGAR (PVT)
9		CONVENTIONAL HANGAR (PVT)
10		T-HANGAR (12 UNITS) (PVT)
11		T-HANGAR (12 UNITS) (PVT)
12		CONVENTIONAL HANGAR (PVT)
13		SRE BUILDING (PUBLIC)
	14 & 15	CONVENTIONAL HANGARS
	16 & 17	T-HANGARS
	19 to 24	CONVENTIONAL HANGARS



Revision	By	Appd.	YY.MM.DD

Issued	By	Appd.	YY.MM.DD

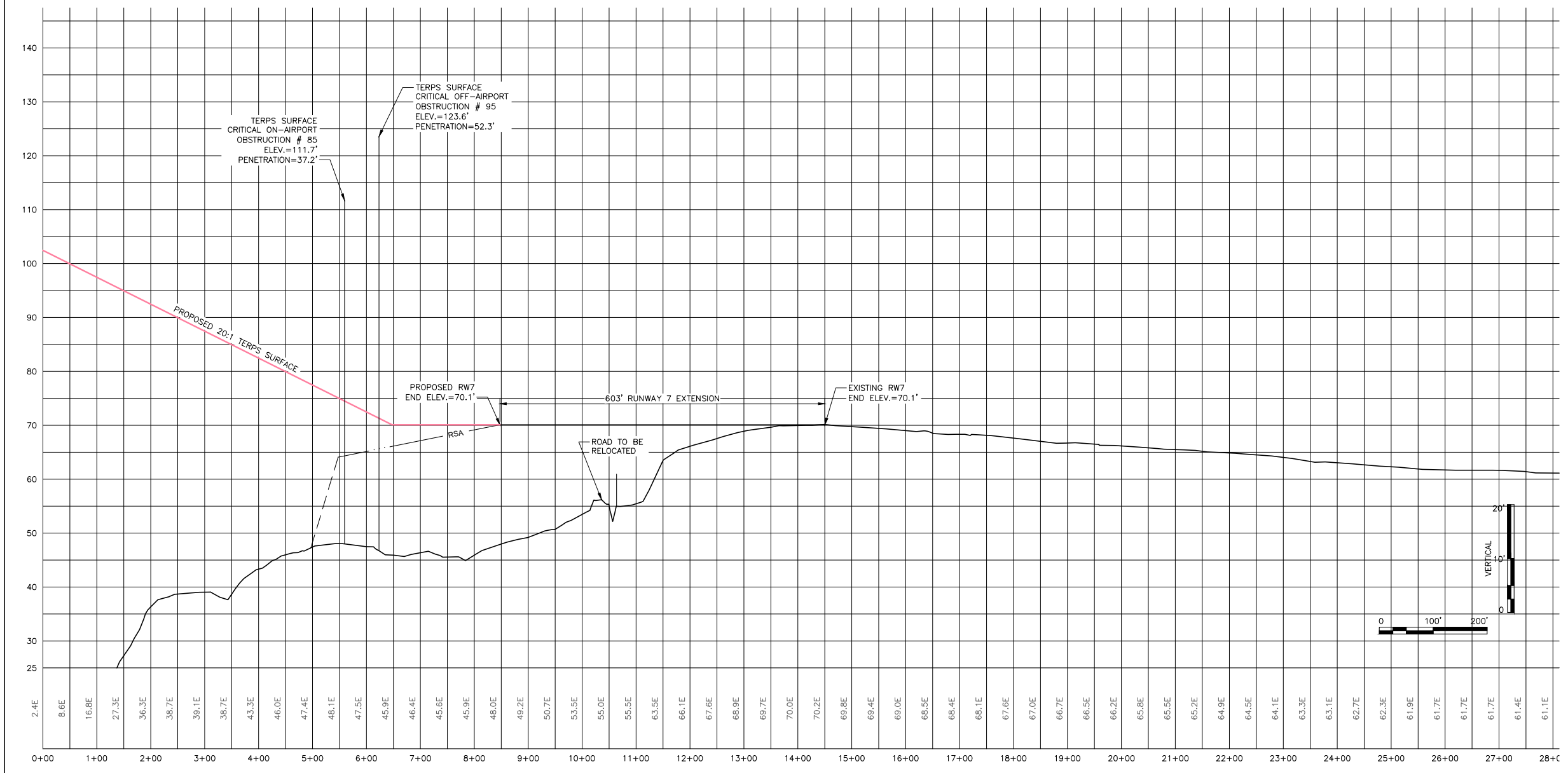
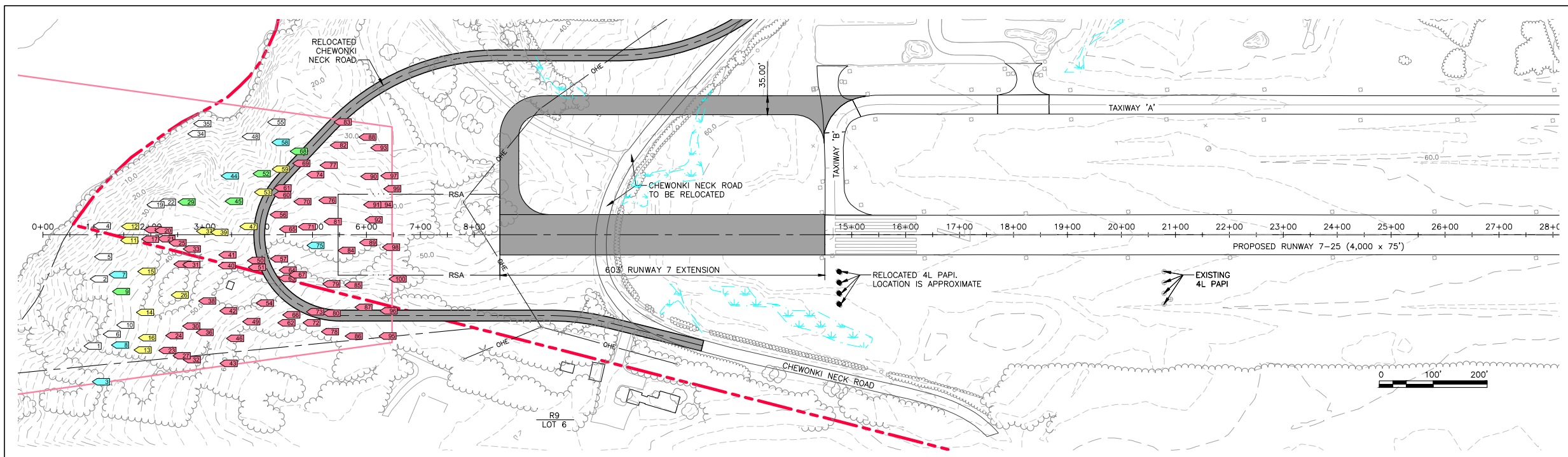
file: \\nfig\_5-5\_terminal\_plan\_option\_5.dwg JEB JEB 11.03.22  
 Dwn. Chkd. Dign. YY.MM.DD

Permit-Seal

Client/Project  
**WISCASSET MUNICIPAL AIRPORT**  
**AIRPORT MASTER PLAN UPDATE**  
 WISCASSET, MAINE

Title  
**TERMINAL AREA PLAN DEVELOPMENT ALTERNATIVE 5**

Project No. 195210458	Scale AS NOTED
Figure No. 5-5	Sheet of
	Revision



Revision	By	Appd.	YY.MM.DD

Issued	By	Appd.	YY.MM.DD

File Name: fig\_5-6\_and\_5-7\_RW7\_AR\_1\_terps.dwg  
 Dwn. Chkd. Dign. YY.MM.DD

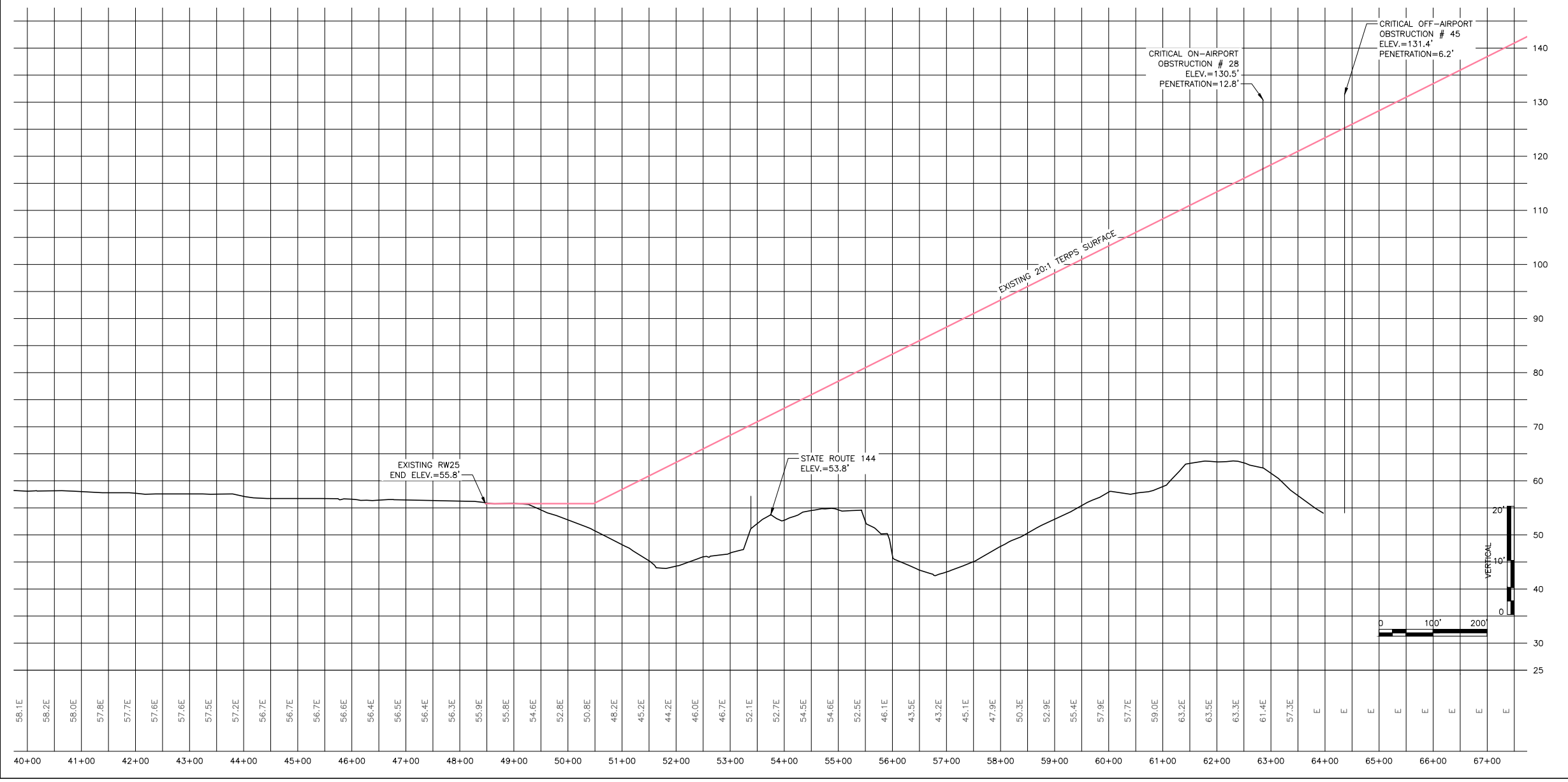
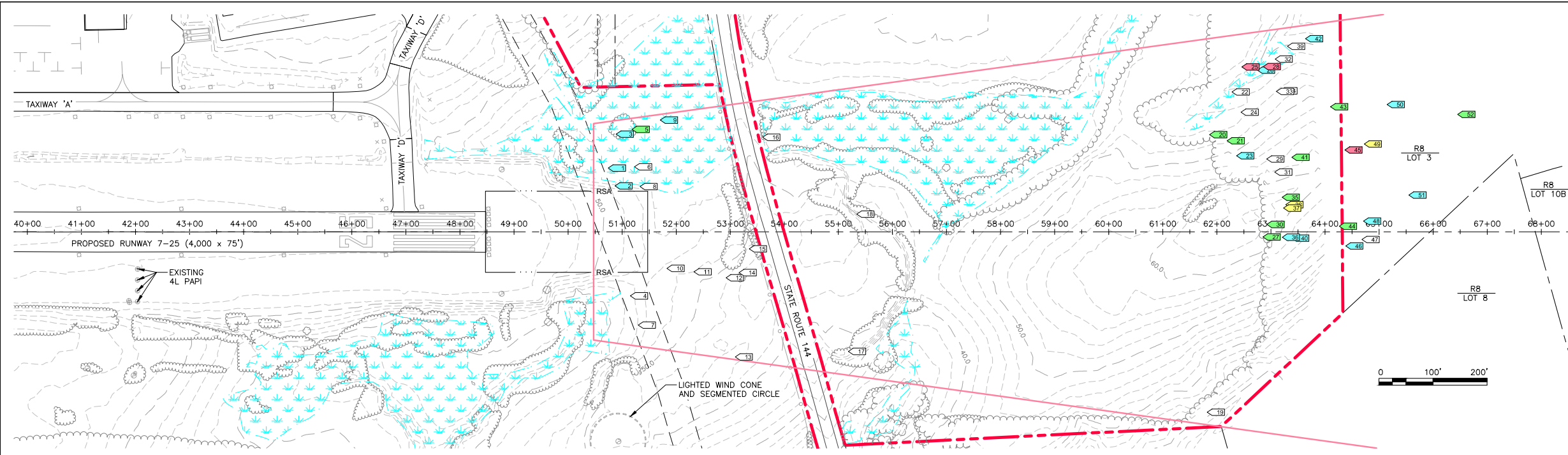
Permit-Seal

Client/Project  
**WISCASSET MUNICIPAL AIRPORT**  
  
**AIRPORT MASTER PLAN UPDATE**  
  
 WISCASSET, MAINE

Title  
**ALTERNATIVE 1 - (603' EXTENSION)**  
**TERPS 20:1 SURFACE**  
**ANALYSIS - RUNWAY 7**

Project No.	Scale
195210458	AS NOTED





Revision	By	Appd.	Y.Y.MM.DD
Issued	By	Appd.	Y.Y.MM.DD

File Name: fig\_5-6\_and\_5-7\_RW7\_AL\_1\_terps.dwg

Permit-Seal

Client/Project  
WISCASSET MUNICIPAL AIRPORT  
AIRPORT MASTER PLAN UPDATE  
WISCASSET, MAINE

Title  
ALTERNATIVE 1 - (EXISTING)  
TERPS 20:1 SURFACE  
ANALYSIS - RUNWAY 25

Project No. 195210458  
Scale AS NOTED

Figure No. Sheet of Revision

ORIGINAL SHEET - ARCH D

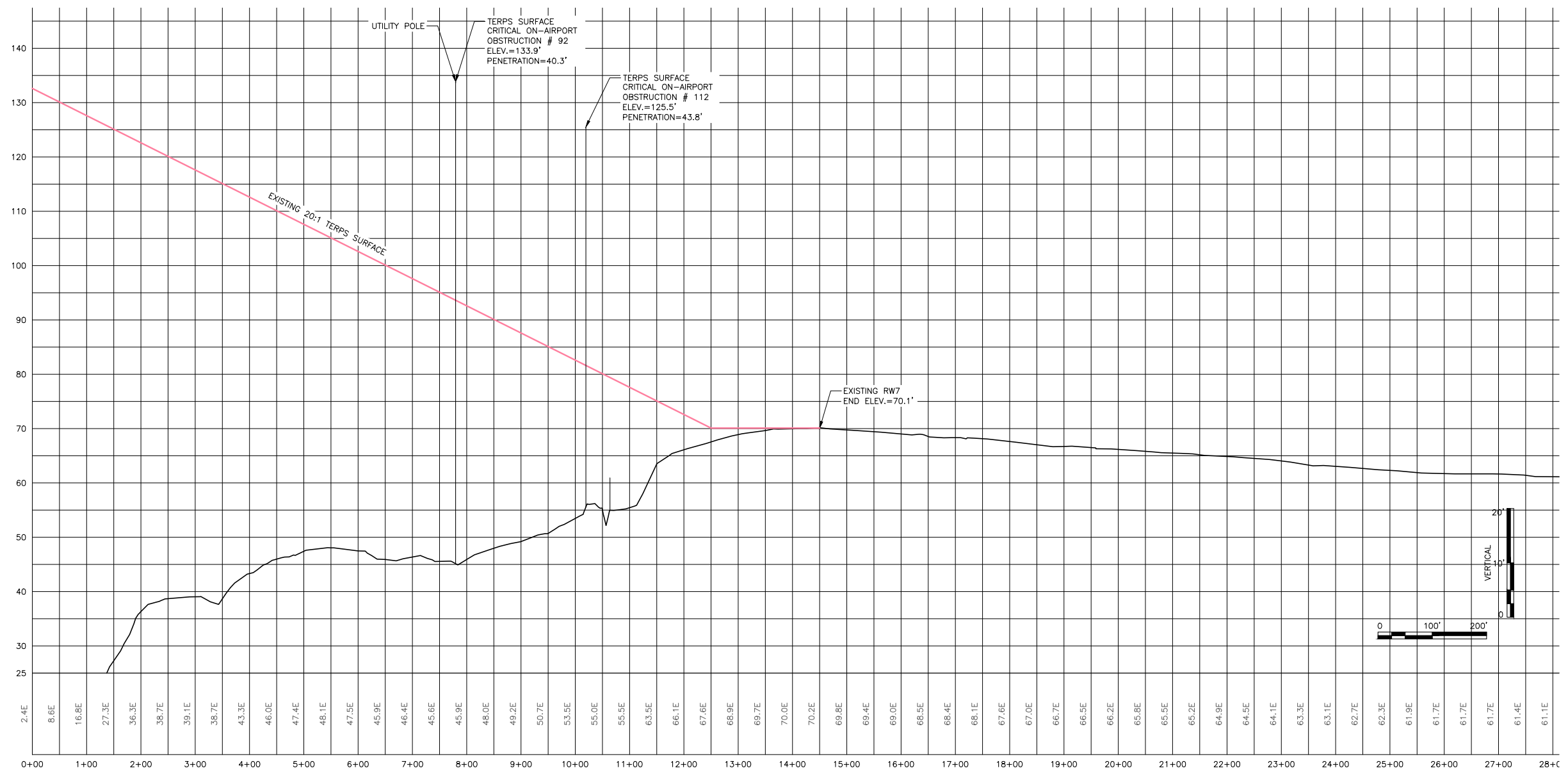
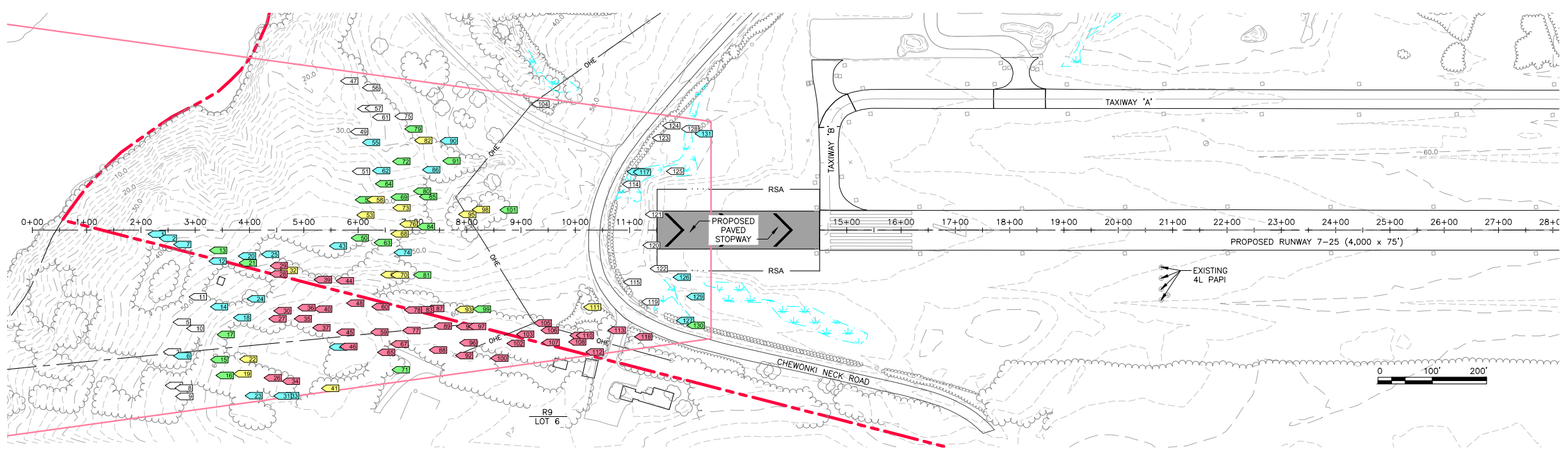




Stantec Consulting Services Inc.  
482 Payne Road  
Scarborough ME 04074 U.S.A.  
Tel. 207.883.3355  
Fax. 207.883.3376  
www.stantec.com

**Copyright Reserved**  
The Contractor shall verify and be responsible for all dimensions. DO NOT scale the drawing - any errors or omissions shall be reported to Stantec without delay.  
The Copyrights to all designs and drawings are the property of Stantec. Reproduction or use for any purpose other than that authorized by Stantec is forbidden.

Consultants



Revision	By	Appd.	Y/M/D

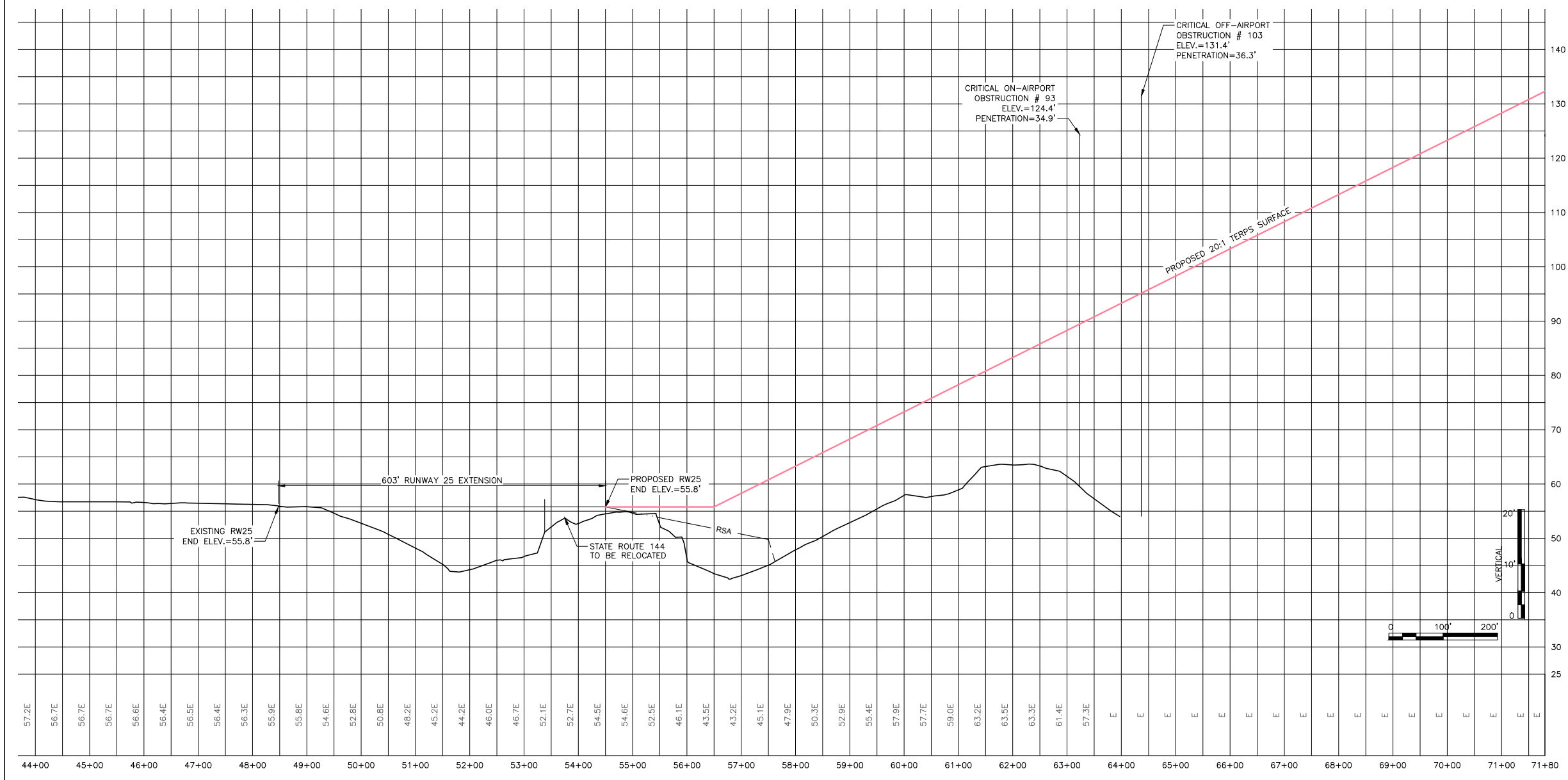
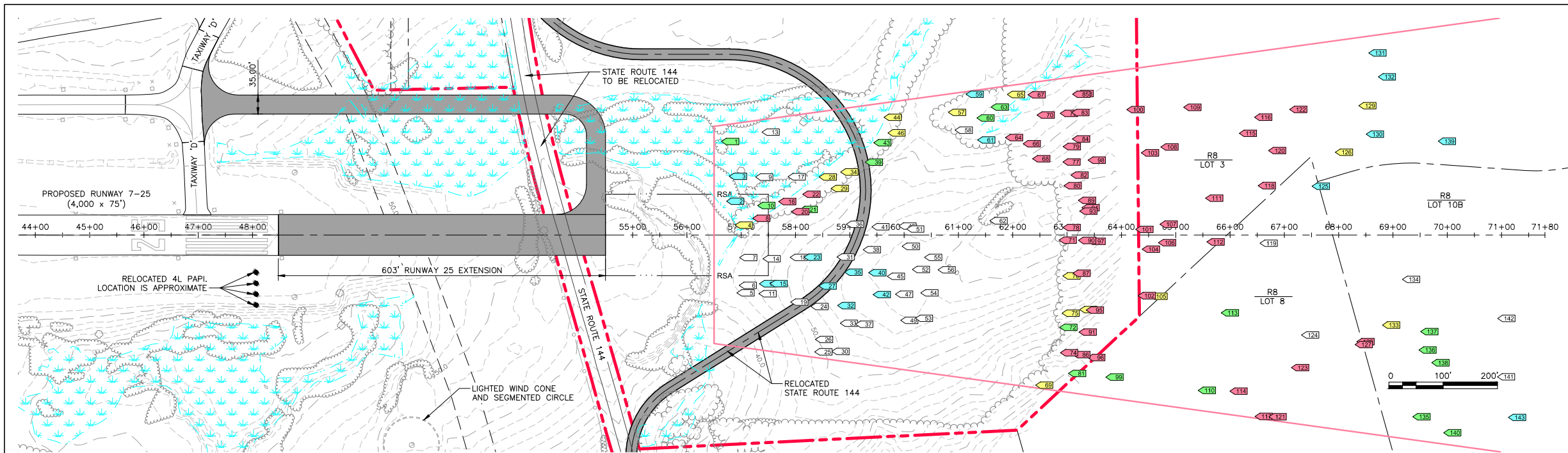
Client/Project  
WISCASSET MUNICIPAL AIRPORT  
AIRPORT MASTER PLAN UPDATE  
WISCASSET, MAINE

Title  
**ALTERNATIVE 2 - (EXISTING)  
TERPS 20:1 SURFACE  
ANALYSIS - RUNWAY 7**

Project No. 195210458 Scale **AS NOTED**

Figure No. 5-8 Sheet of Revision 0

THERE ARE (2) NEAR OBSTRUCTIONS NOT SHOWN.  
TAG 144 IS LOCATED 3,258.5' FROM PROPOSED THRESHOLD.  
450.2' RIGHT OF CENTERLINE.  
-10.7' BELOW 20:1 TERPS SURFACE  
TAG 145 3,380.7 FROM PROPOSED THRESHOLD.  
435.5' RIGHT OF CENTERLINE.  
-9.6 BELOW 20:1 TERPS SURFACE



Revision	By	Appd.	YYMMDD

File Name: fig\_5-8\_and\_5-9\_RWT\_AR\_2\_terps.dwg  
Dwn. Chkd. Dign. YYMMDD

Permit-Seal

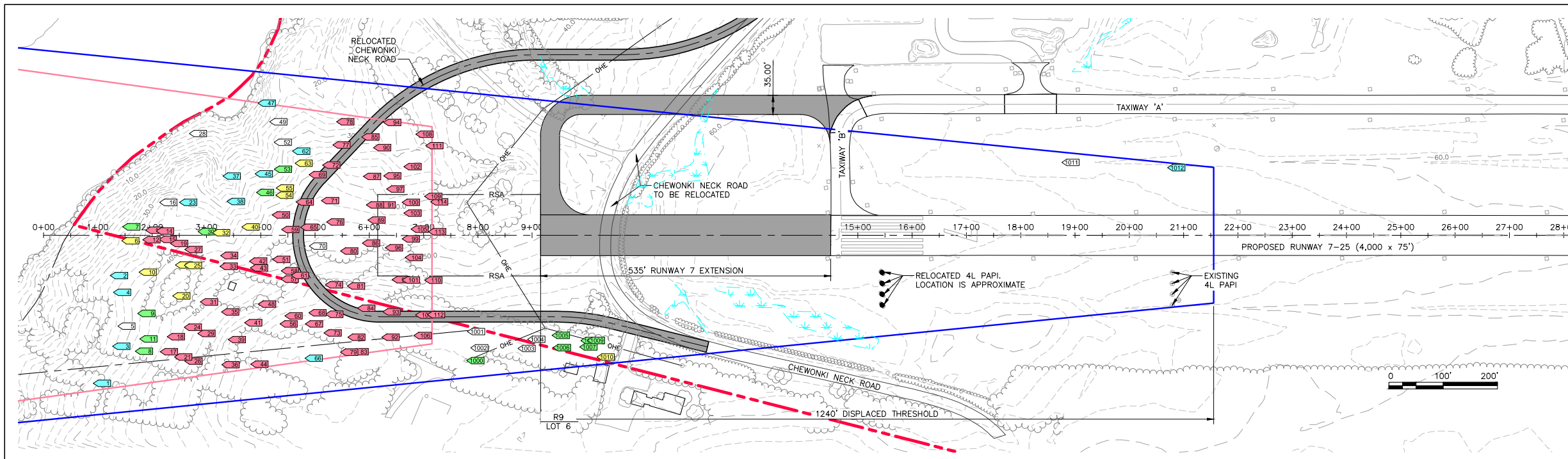
Client/Project  
WISCASSET MUNICIPAL AIRPORT  
AIRPORT MASTER PLAN UPDATE  
WISCASSET, MAINE

Title  
ALTERNATIVE 2 - (603' EXTENSION)  
TERPS 20:1 SURFACE  
ANALYSIS - RUNWAY 25

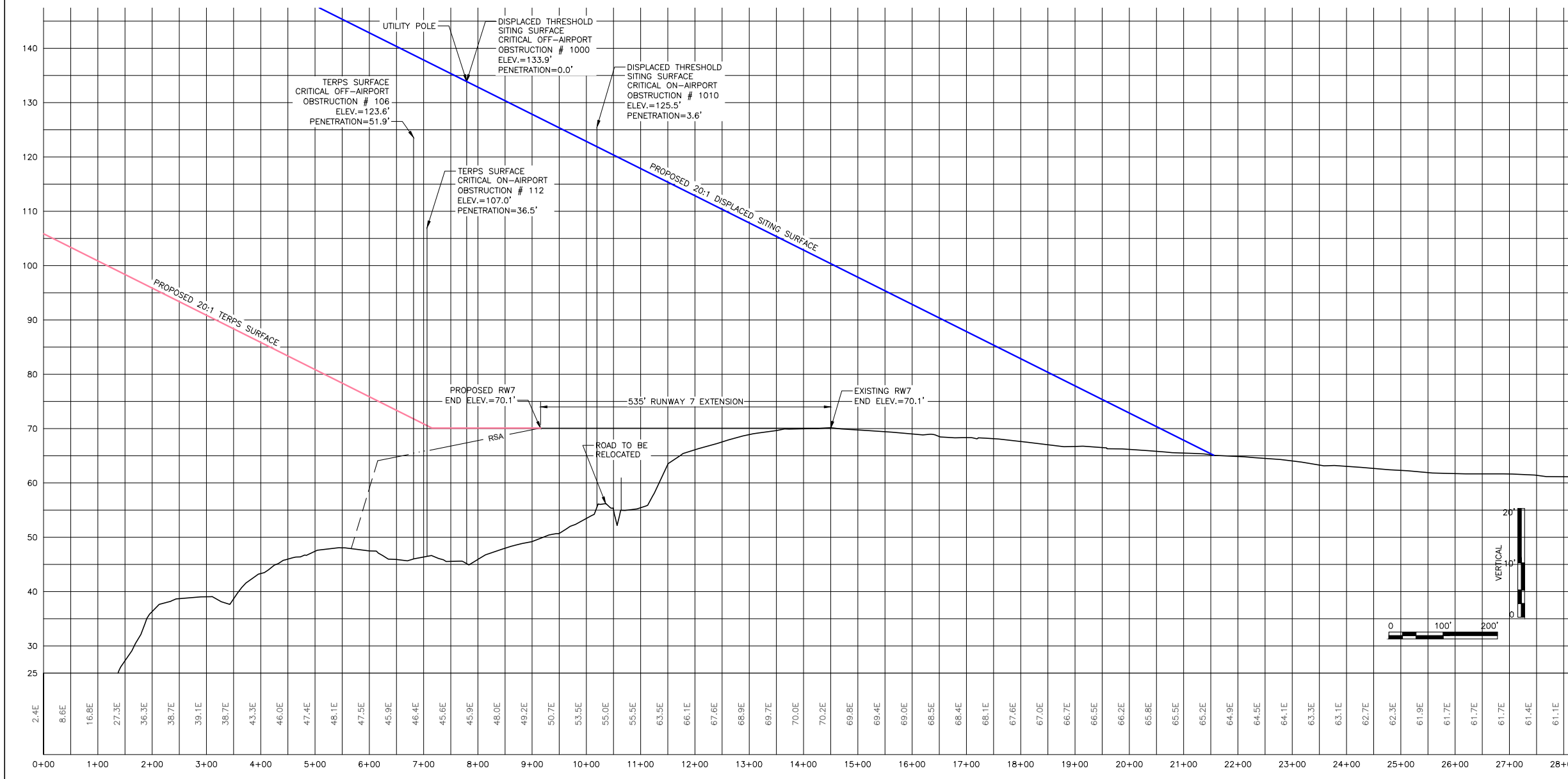
Project No.  
195210458

Scale  
AS NOTED

Figure No. Sheet Revision



DECLARED DISTANCES	
TORA	4,000'
TODA	4,000'
ASDA	2,760'
LDA	2,760'



Revision	By	Appd.	Y/M/M.DD

Issued	By	Appd.	Y/M/M.DD

File Name: fig\_5-10\_and\_5-11\_RW7\_Alt\_3\_terps.dwg  
 Dwn: Chkd: Dgn: Y/M/M.DD

Permit-Seal

Client/Project  
 WISCASSET MUNICIPAL AIRPORT  
 AIRPORT MASTER PLAN UPDATE  
 WISCASSET, MAINE

Title  
**ALTERNATIVE 3 - (535' EXTENSION)  
 TERPS 20:1 SURFACE  
 ANALYSIS - RUNWAY 7**

Project No.	Scale
195210458	AS NOTED

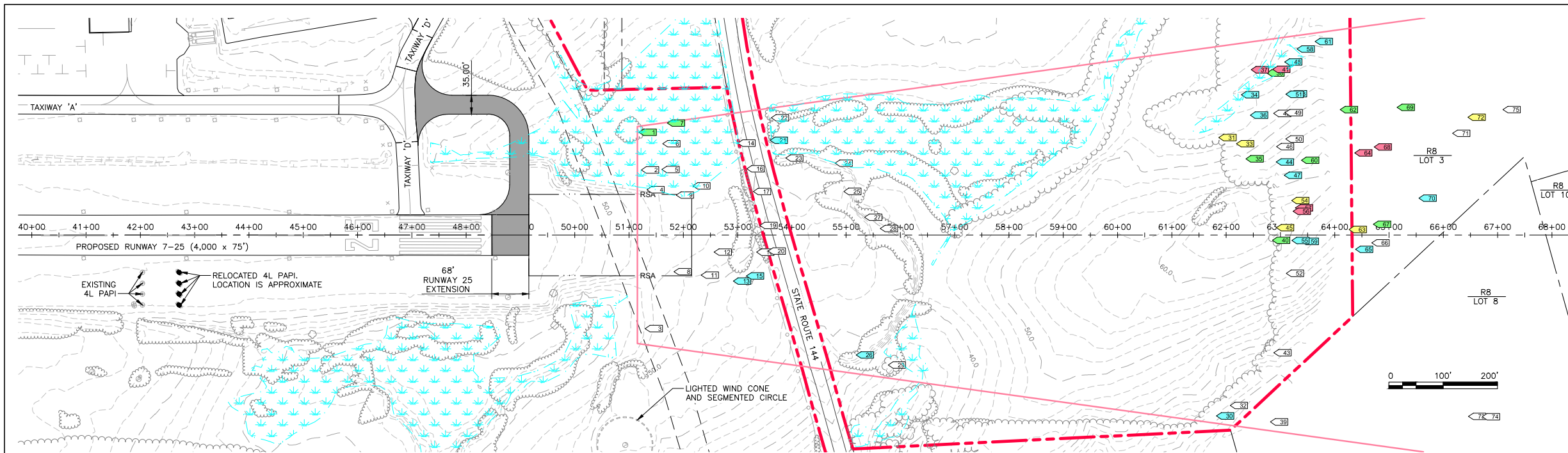
Figure No.	Sheet	Revision
5-10	of	0



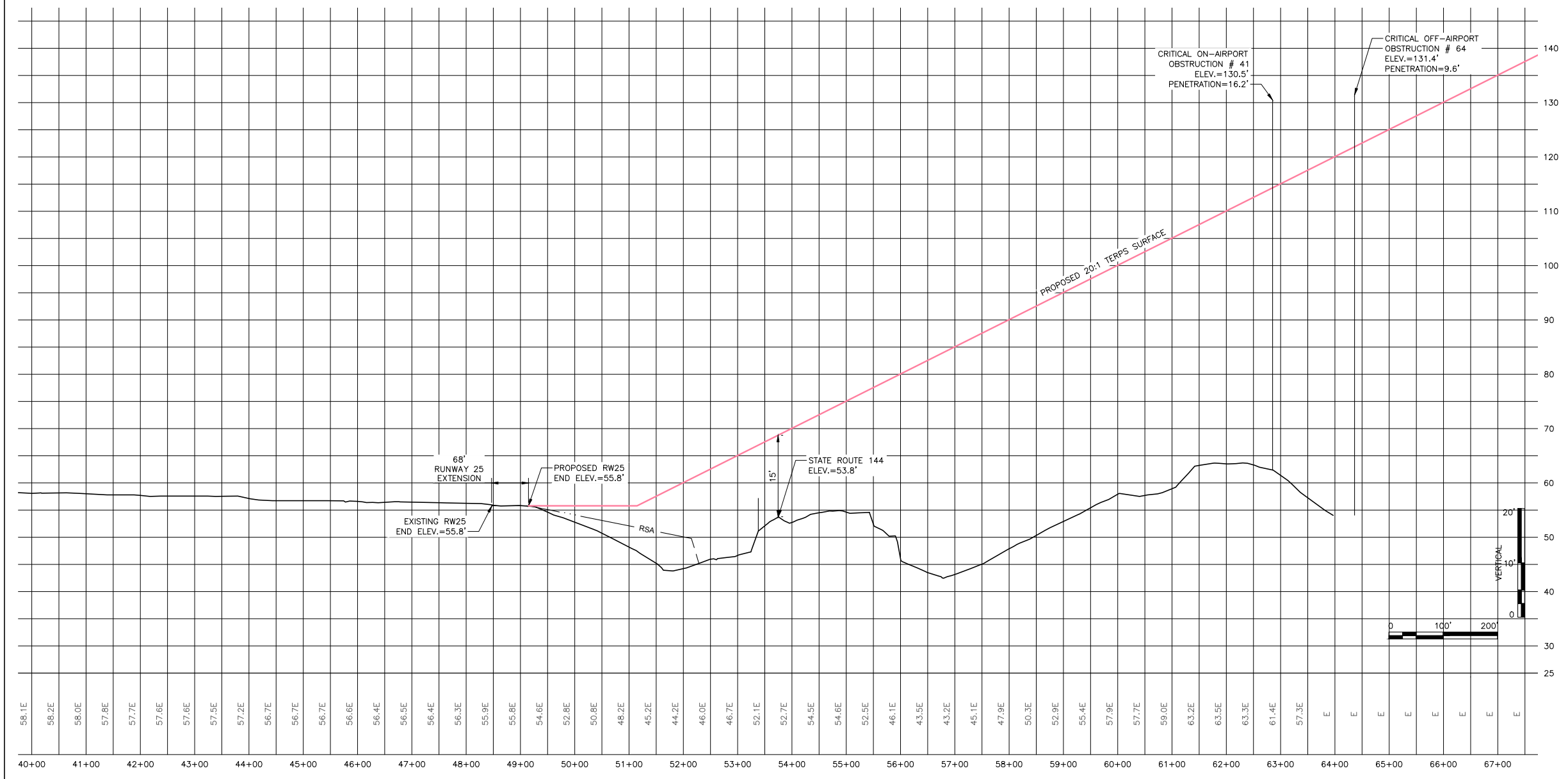
Copyright Reserved

The Contractor shall verify and be responsible for all dimensions. DO NOT scale the drawing - any errors or omissions shall be reported to Stantec without delay.  
The Copyrights to all designs and drawings are the property of Stantec. Reproduction or use for any purpose other than that authorized by Stantec is forbidden.

Consultants



DECLARED DISTANCES	
TORA	2,760'
TODA	2,760'
ASDA	4,000'
LDA	4,000'



Revision	By	Appd.	Y/M/M/DD

File Name: fig\_5-10\_and\_5-11\_RW7\_Alt\_3\_terps.dwg  
Dwn: Chkd. Dign. Y/M/M/DD

Permit-Seal

Client/Project  
WISCASSET MUNICIPAL AIRPORT  
AIRPORT MASTER PLAN UPDATE  
WISCASSET, MAINE

Title  
ALTERNATIVE 3 - (68' EXTENSION)  
TERPS 20:1 SURFACE  
ANALYSIS - RUNWAY 25

Project No. 195210458  
Scale AS NOTED

Figure No. 5-11  
Sheet of 0